

RIECKER'S ADDITION

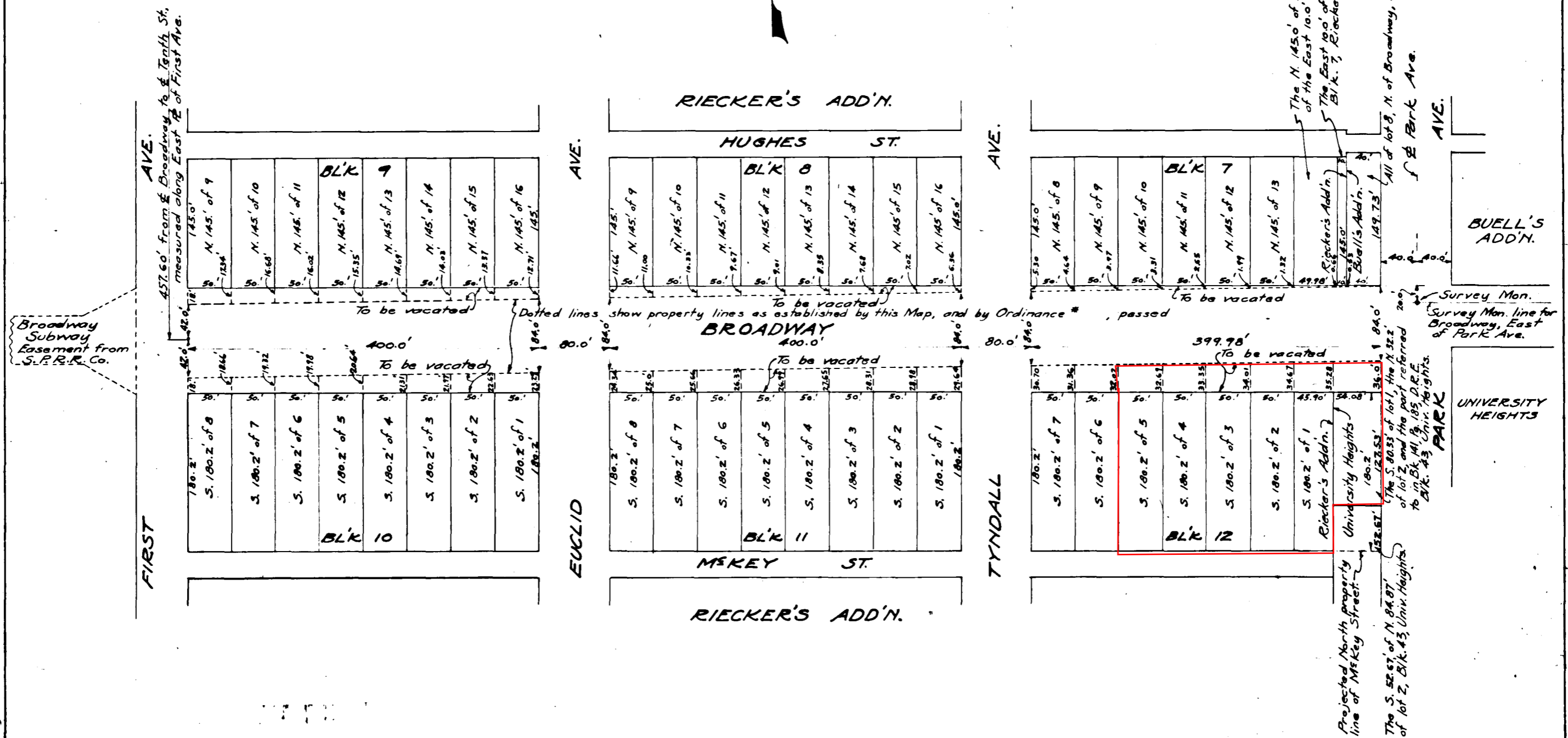
PLAN NO. H-145

MP 06047

RECORDED: AUGUST 22, 1934

***** THE FOLLOWING PLAT IS AN ANNOTATED
VERSION OF THE ORIGINAL DOCUMENT. IT HAS
BEEN ALTERED BY PIMA COUNTY DEVELOPMENT
SERVICES TO SHOW ADDITIONAL INFORMATION.
ORIGINAL COPIES MAY BE OBTAINED FROM THE
PIMA COUNTY RECORDER*****

See BK 03 PG 58
 And BK 03 PG 127
 For Addressing



Broadway Subway Easement from S.P.R.R. Co.

I, Charles C. Irvin, Clerk of the City of Tucson, hereby certify that this plat was approved by the Mayor and Council of the City of Tucson, at a meeting held on the 20th day of August, 1934.

Signed *Charles C. Irvin*
 City Clerk

ANNOTATED
 COPY

References:-
 City Maps, I-365; H-109; H-114

CITY OF TUCSON
 ENGINEERING DEPT.
 PLAN N° H-145

RE-ESTABLISHMENT OF PROPERTY LINES
 OF BROADWAY - BETWEEN FIRST AVE. & PARK AVE.
 Drawn by Metcalf - August 1935.
 Scale: 1" = 80'

ORIGINAL 100% DRAWING APPROVED
Walter Dumbell